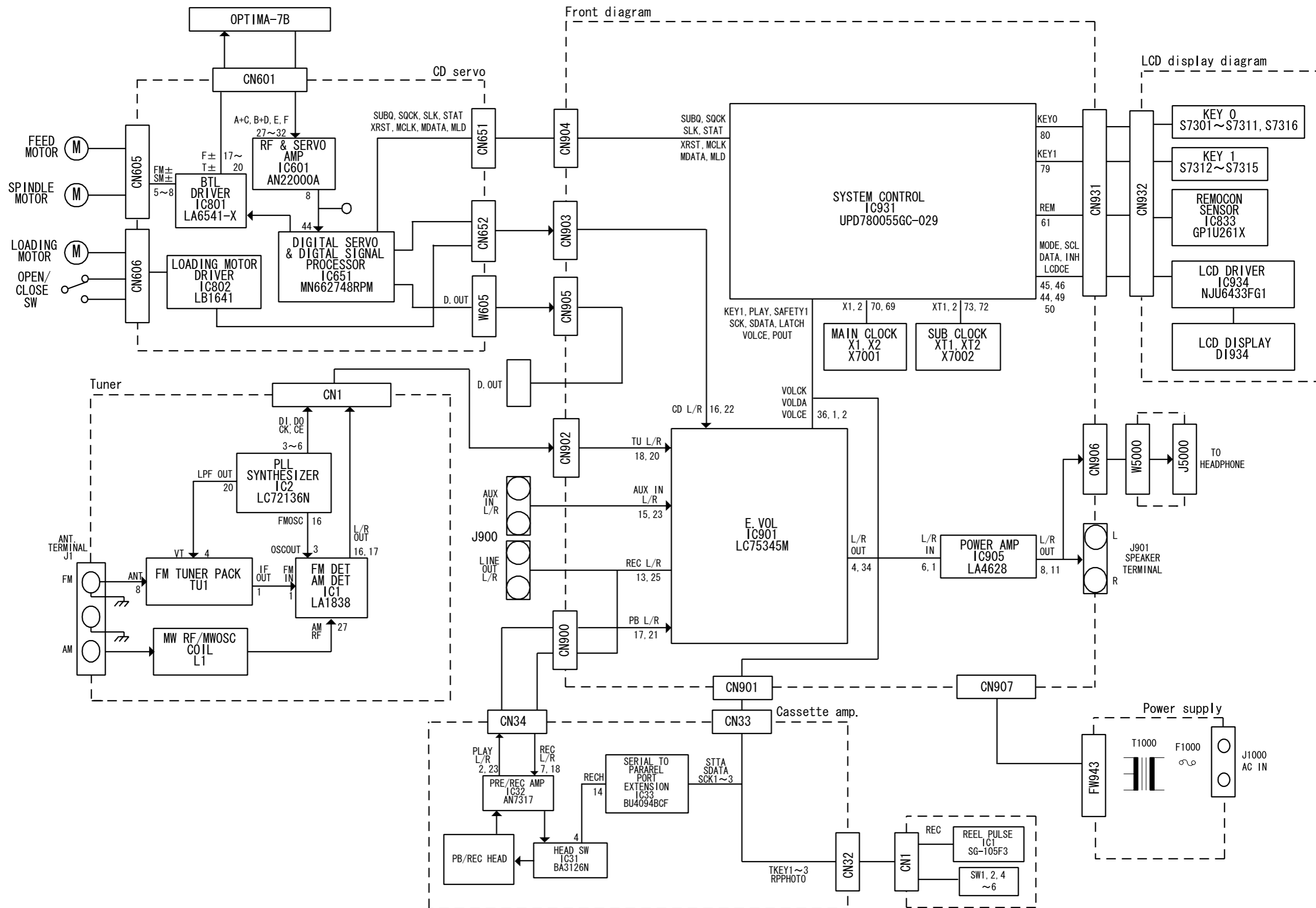


Block diagram



Standard schematic diagrams

Front circuit

6

5

4

3

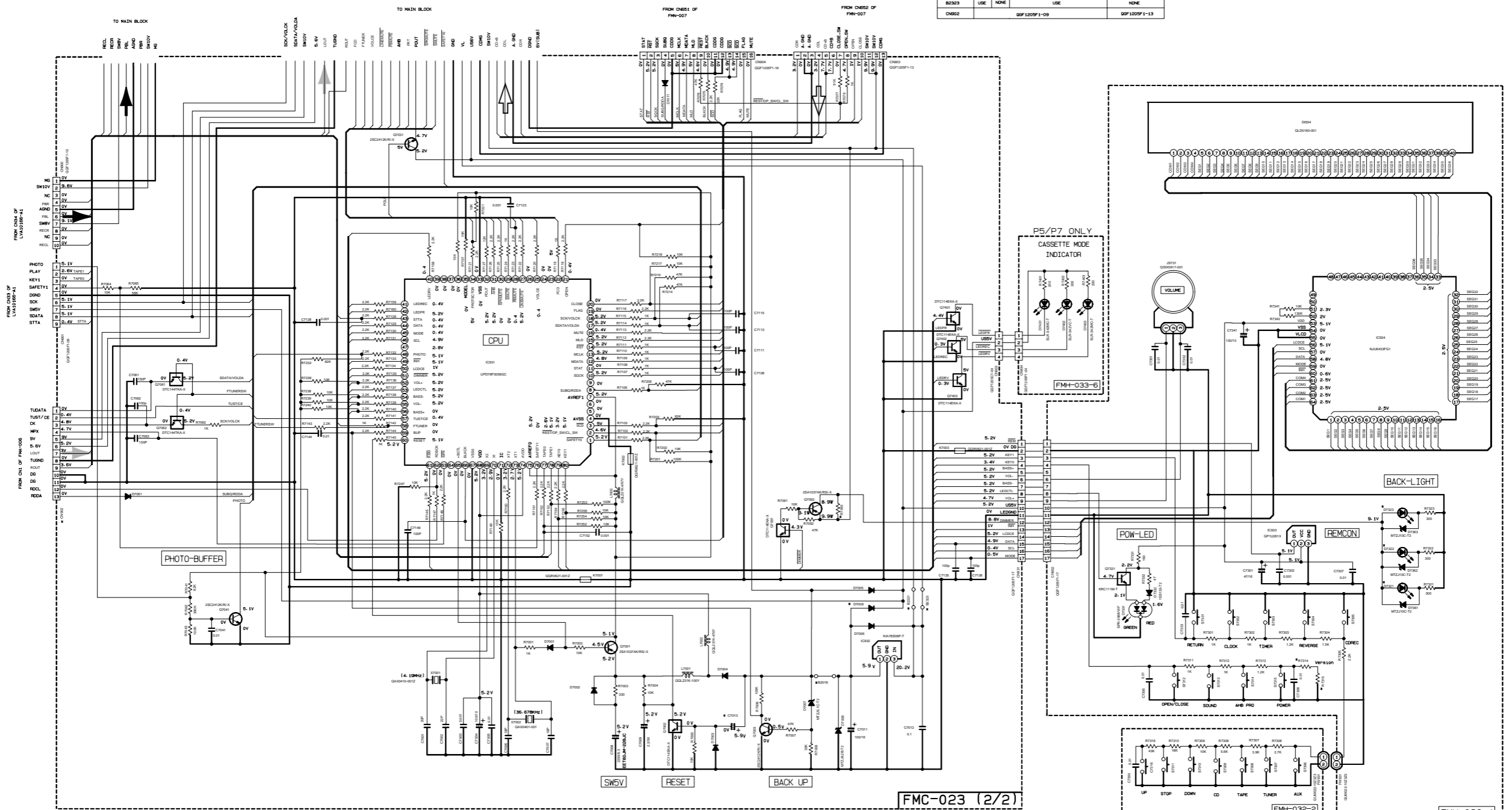
2

1

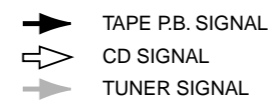
DTC144TKA-X 47K OPEN Q7061/Q7062	DTC144TKA-X 10K OPEN Q7002	DTC144EK-X 10K OPEN Q7091/Q7401/Q7402/Q7403
---	-------------------------------------	--

MARK

VERSION	FB-PS	UX-P3	UX-P3R
ITEMS	(L)	(A)	(E)
R7059	1K	1K	1K
C7861	BLUE	BLUE	BLUE
D7303	BLUE	BLUE	BLUE
D7071/8M	BK		D7071
R7314 (VERSION1)	10K	B/W	B/W
R7315 (VERSION1)	50K	47K	47K
C7010	4.7/50	10/50	10/50
D7009	NONE	USE	USE
R0018	USE	NONE	USE
R0021	NONE	USE	USE
R0023	USE	NONE	USE
C8002	GIP 1209P 1-09		GIP 1209P 1-13

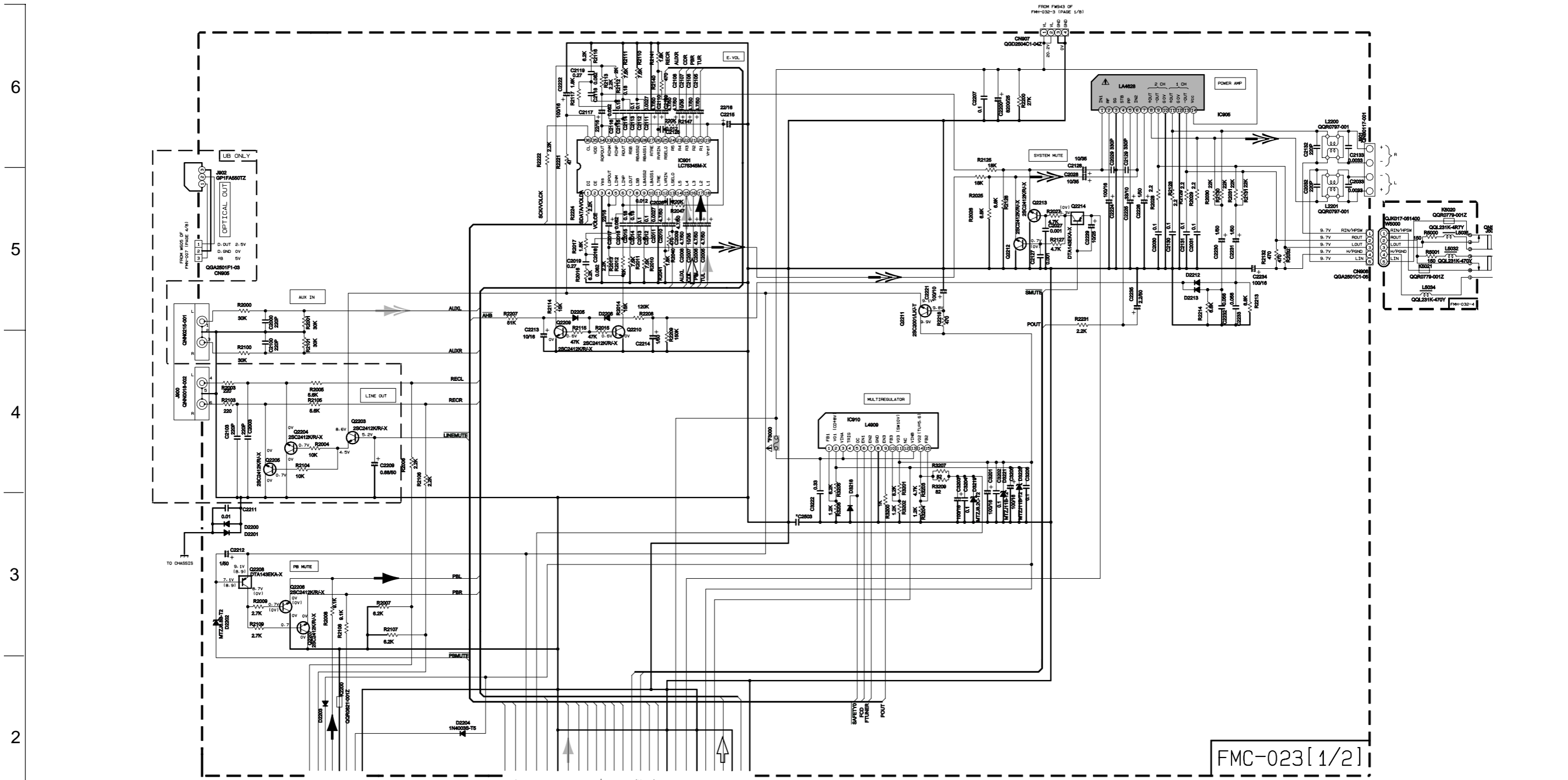


NOTES
 1. VOLTAGES ARE DC-MEASURED WITH A DIGITAL VOLT METER OR OSCILLOSCOPE WITHOUT INPUT SIGNAL.
 CONDITION --- CD STOP MODE
 2. UNLESS OTHERWISE SPECIFIED,
 ALL RESISTORS ARE 1/10W ±5% METAL GLAZE RESISTOR.
 ALL CAPACITORS ARE CERAMIC CAPACITOR OR MYLAR CAPACITOR.
 ALL RESISTANCE VALUES ARE IN Ω(M), K, OR M.
 ALL CAPACITANCE VALUES ARE IN nF(pF).
 ALL INDUCTANCE VALUES ARE IN μH(mH).
 ALL ELECTROLYTIC CAPACITORS ARE SHOWN IN THE FORM OF CAPACITANCE(μF)/RATED VOLTAGE (V).
 ALL DIODES ARE IN 1SS133-T7 UNLESS SPECIFIED.



A B C D E F G H I

Main circuit



FMC-023 [1/2]

1. ALL VALUES ARE MEASURED IN VOLTS ----- CD STOP MODE.

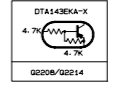
IC	PIN NO.	1	2	3	4	5	6	7	8	9	10	11	12	13	14	15	16	17	18	19	20	21	22	23	24	25	26	27	28	29	30	31	32	33	34	35	36				
IC901		5.2	0.4	0	3.7	3.7	3.7	3.7	3.7	3.7	3.7	3.7	3.7	3.7	3.7	3.7	3.7	3.7	3.7	3.7	3.7	3.7	3.7	3.7	3.7	3.7	3.7	3.7	3.7	3.7	3.7	3.7	3.7	3.7	3.7	3.7	3.7	3.7	7.4	0	
IC905		1.2	9.4	0	2.9	2	1.2	1.4	9	9.2	0	9	0	9.2	20.2																										
IC910		1.3	7.8	19.8	0	5.2	0.4	5.1	0	5.2	1.3	9.9	0	19.8	5.3	1.3																									

2. UNLESS OTHERWISE SPECIFIED.
 ALL RESISTORS ARE 1/10W 45% METAL GLAZE RESISTOR.
 ALL CAPACITORS ARE CERAMIC CAPACITOR OR MYLAR CAPACITOR.
 ALL RESISTANCE VALUES ARE IN OHM (Ω).
 ALL CAPACITANCE VALUES ARE IN μF (μF).
 ALL INDUCTANCE VALUES ARE IN mH (mH).
 ALL DIODES ARE 1SS133-T2 TYPE UNLESS SPECIFIED.

*MARK

VERSION	PART	F3000	C2503
ALL EXCEPT UP		T1AL	0.001
UP		1A-250V	0.001

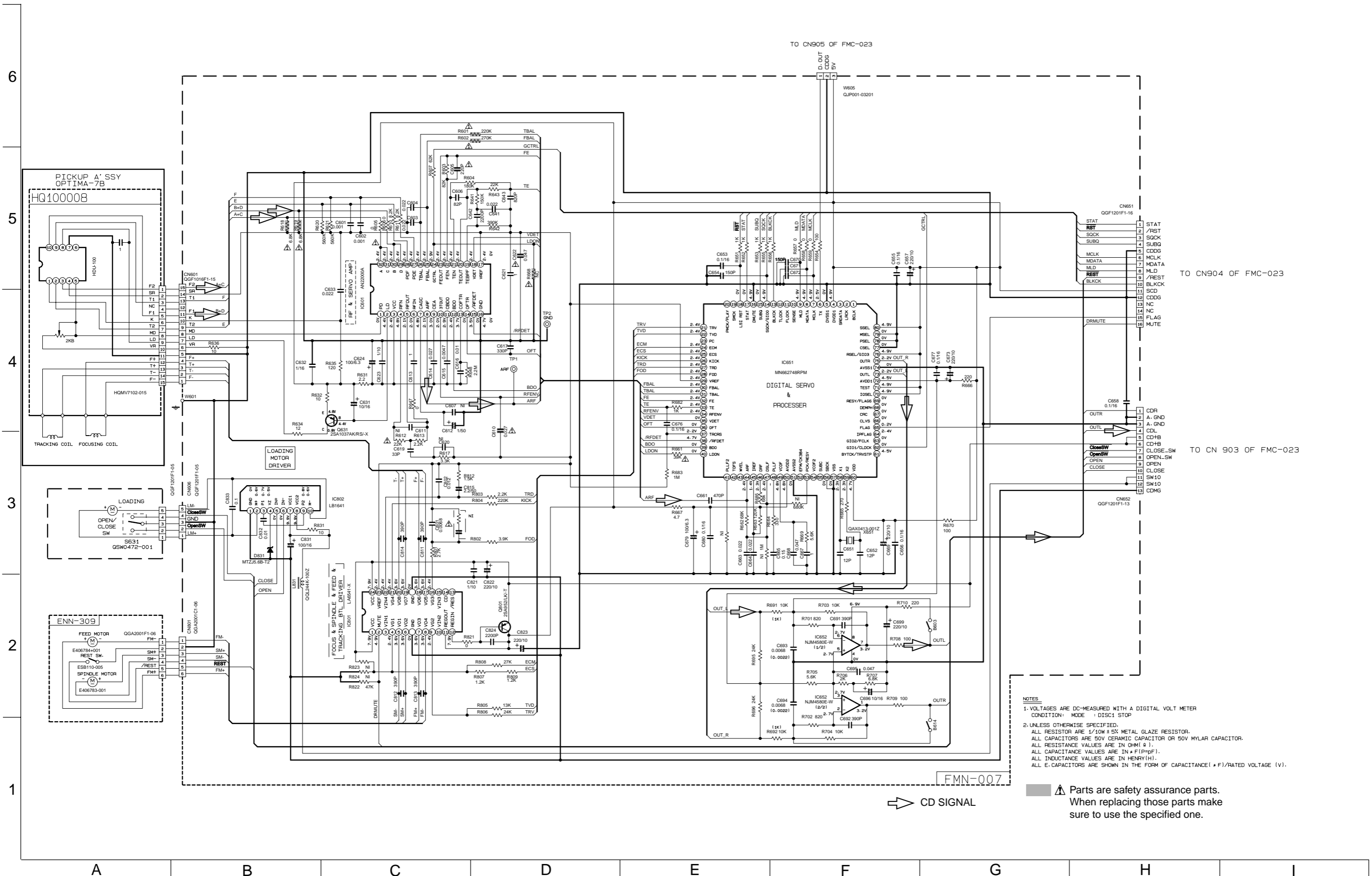
▲ Parts are safety assurance parts. When replacing those parts make sure to use the specified one.



- ▶ TAPE P.B. SIGNAL
- ▷ CD SIGNAL
- ↳ TUNER SIGNAL
- ↘ AUX IN SIGNAL
- ↖ MAIN SIGNAL

A B C D E F G H I

CD servo circuit

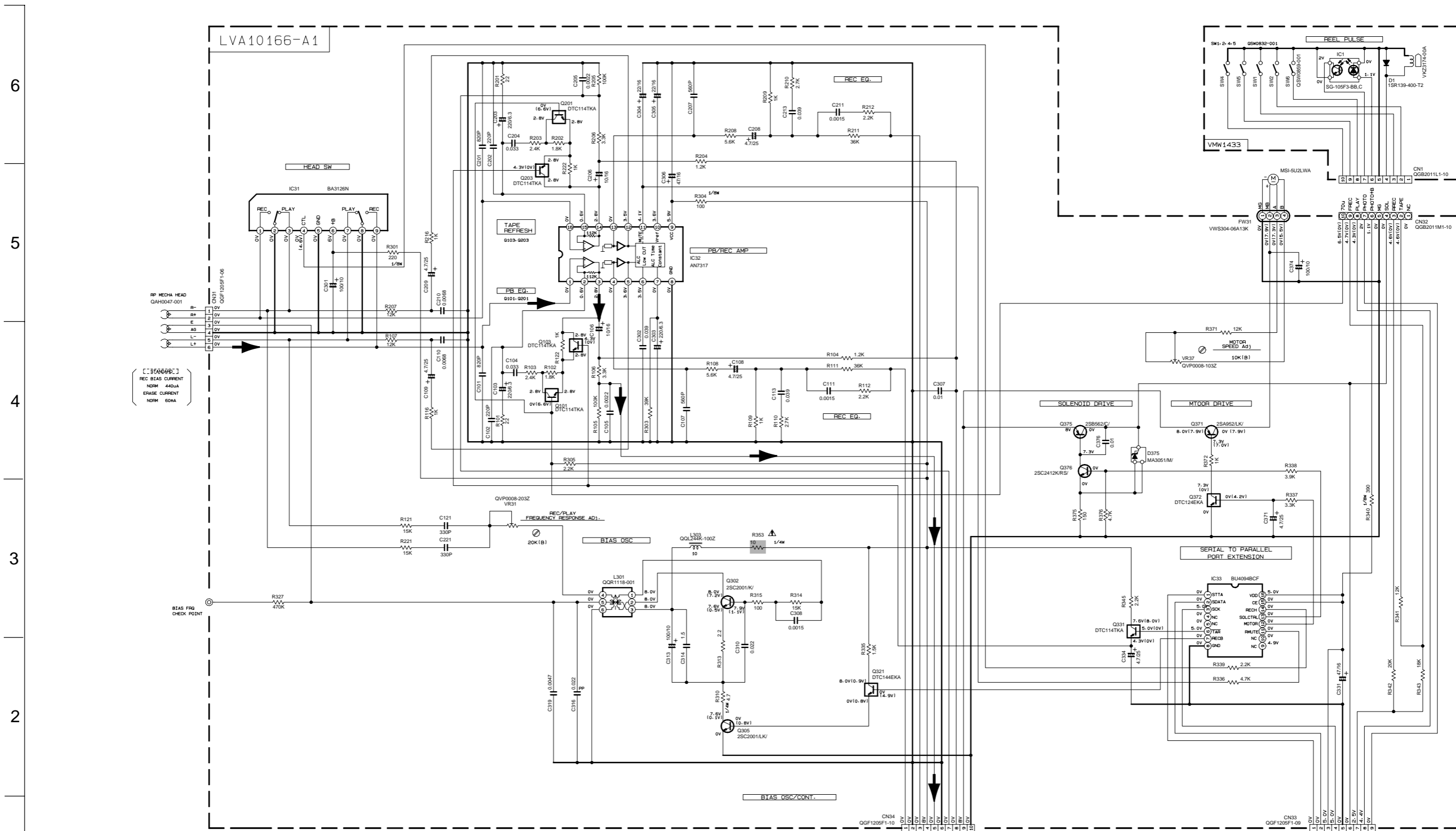


NOTES
 1. VOLTAGES ARE DC-MEASURED WITH A DIGITAL VOLT METER
 CONDITION: MODE : DISC1 STOP
 2. UNLESS OTHERWISE SPECIFIED,
 ALL RESISTOR ARE 1/10W ± 5% METAL GLAZE RESISTOR.
 ALL CAPACITORS ARE 50V CERAMIC CAPACITOR OR 50V MYLAR CAPACITOR.
 ALL RESISTANCE VALUES ARE IN OHM(Ω).
 ALL CAPACITANCE VALUES ARE IN PICO(F)(pF).
 ALL INDUCTANCE VALUES ARE IN HENRY(H).
 ALL E-CAPACITORS ARE SHOWN IN THE FORM OF CAPACITANCE(μF)/RATED VOLTAGE (V).

▲ Parts are safety assurance parts.
 When replacing those parts make
 sure to use the specified one.

FMN-007
 ⇨ CD SIGNAL

Cassette amplifier circuit



NOTES

1. VOLTAGES ARE DC-MEASURED WITH A DIGITAL VOLT METER OR OSCILLOSCOPE WITHOUT INPUT SIGNAL. CONDITION : MECHA STOP MODE

2. UNLESS OTHERWISE SPECIFIED, RESISTORS ARE 1/10W ±5% METAL GLAZE RESISTOR. ALL RESISTANCE VALUES ARE IN Ω(MHΩ). ALL CAPACITORS ARE CERAMIC CAPACITOR OR MYLAR CAPACITOR. ALL CAPACITANCE VALUES ARE IN nF(μF). ALL INDUCTANCE VALUES ARE IN μH(mH). ALL E-CAPACITORS ARE SHOWN IN THE FORM OF CAPACITANCE (μF)/RATED VOLTAGE (V). POLYPROPYLENE CAPACITOR

PARTS	NAME	REF. NO
	FA1A4Z OF DTC114TKA	Q101-Q201 Q103-Q203 Q331
	FA1F4H OF DTC124EKA	Q321 Q372

▲ Parts are safety assurance parts. When replacing those parts make sure to use the specified one.

➔ TAPE P.B. SIGNAL

TO CN90 OF FMC-023

TO CN901 OF FMC-023

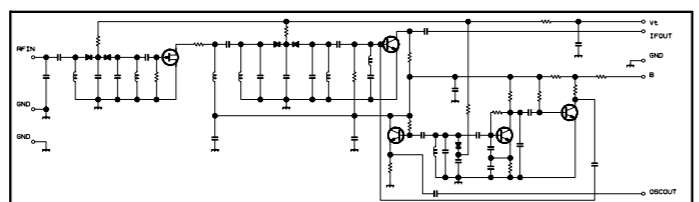
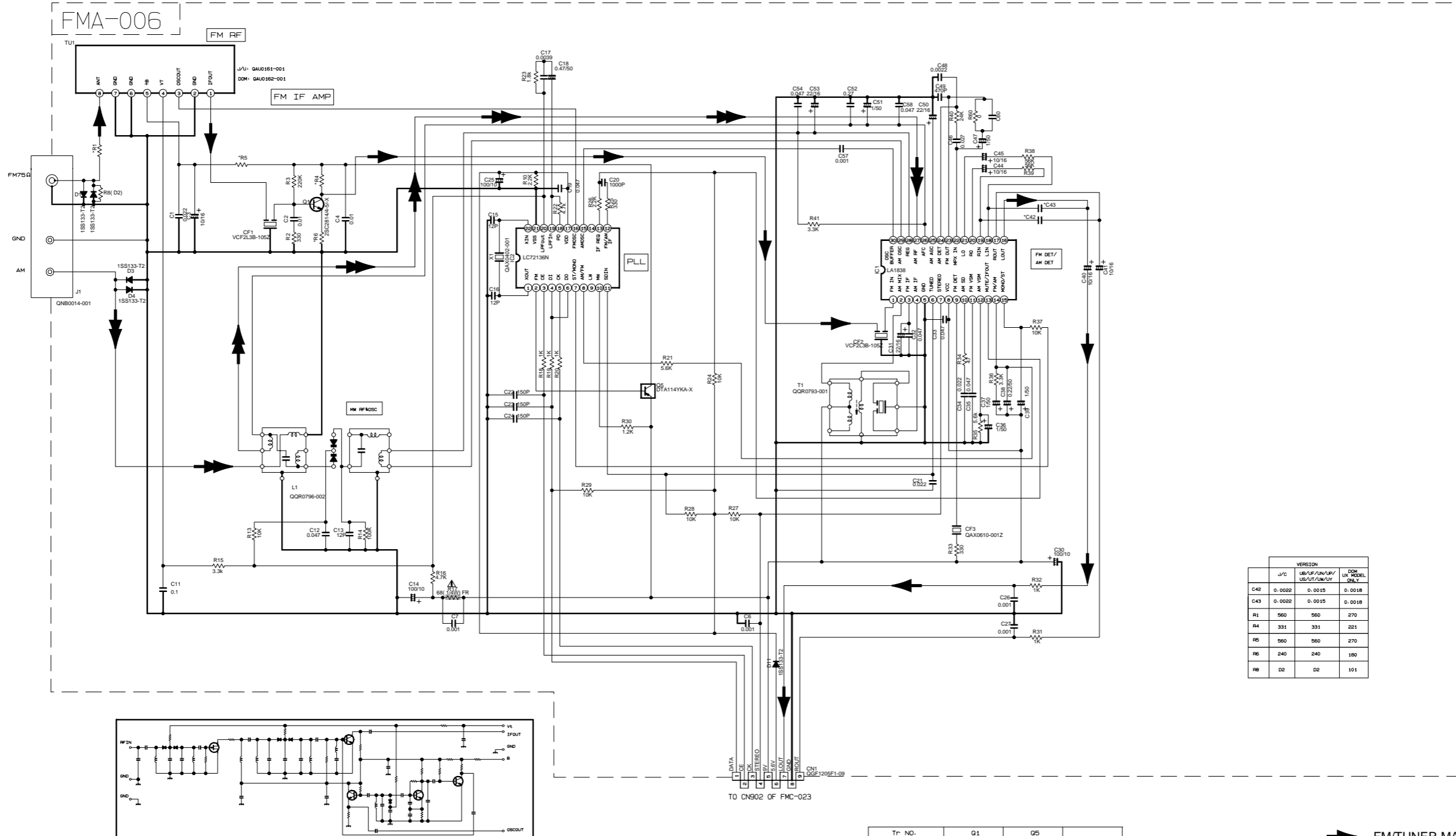
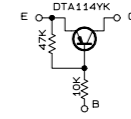
A B C D E F G H I

■ Tuner circuit

NOTES

- VOLTAGES ARE DC-MEASURED WITH A DIGITAL VOLT METER.
- ALL RESISTORS ARE 1/8W ±5% METAL GLAZE RESISTOR.
- ALL RESISTANCE VALUES ARE IN OHM(Ω).
- ALL CAPASITANCE VALUES ARE IN *F(P=PF).
- ALL E. CAPASITORS ARE SHOWN IN THE FORM OF CAPASITANCE (*F)/RATED VOLTAGE (V).
- SI DIODES (D) ARE ALL 1SS133-T THAT CAN BE CHANGED TO SIMILAR DIODE SUCH AS MA165 OR HSS104J.
- PARTS NO. OF TRANSISTORS ARE AS FOLLOWS.
 Q1 2SC2814/4-5/-X Q2-Q3 2SC2412K/R/-X
 Q4-Q5 DTA114YKA-X

B. INSIDE OF DIGITAL TRANSISTORS ARE SHOWN AS FOLLOWS.



VERSION	J/C		DOM
	USE/F/FAN/AV/	USE/TA/VA/AY	
C42	0.0022	0.0015	0.0018
C43	0.0022	0.0015	0.0018
R1	560	560	270
R4	331	331	221
R5	560	560	270
R6	240	240	180
R8	02	02	101

CONDITION	PIN NO.	1	2	3	4	5	6	7	8	9	10	11	12	13	14	15	16	17	18	19	20	21	22	23	24	25	26	27	28	29	30
IC1	FM NO SIGNAL	3.6	8.9	3.6	3.6	0	5.0	5.0	8.9	8.9	1.3	0.1	0	0.9	7.8	7.8	4.3	4.3	4.3	3.4	3.4	3.4	2.8	3.4	0	0	3.5	3.5	3.6	3.6	2.7
	FM 60dB STEREO	3.6	8.9	3.6	3.6	0	5.0	5.1	8.9	8.9	1.3	4.3	0	0.9	7.8	7.8	4.3	4.3	4.3	3.4	3.4	3.4	2.8	3.4	0	0	3.6	3.6	3.6	3.6	2.7
	AM NO SIGNAL	3.5	9.0	3.5	3.5	0	5.0	5.1	9.0	9.0	2.6	1.3	0	0.9	4.7	5.5	4.3	4.3	4.3	3.3	3.3	3.2	2.8	ust	0.7	0.7	3.6	3.6	3.6	3.6	2.1
IC2	FM NO SIGNAL	2.5	0	0	5.0	4.9	5.0	7.9	7.8	3.6	6.1	5.1	0	0	0	2.5	5.1	0.9	0.9	3.8	0	2.3									

Tr. NO.	Q1			Q5		
PIN NO.	E	C	B	E	C	B
FM 87.5MHz NO SIGNAL	0	7.1	0.85	8.9	8.8	0
AM 522kHz NO SIGNAL	0	0	9.0	0	8.9	

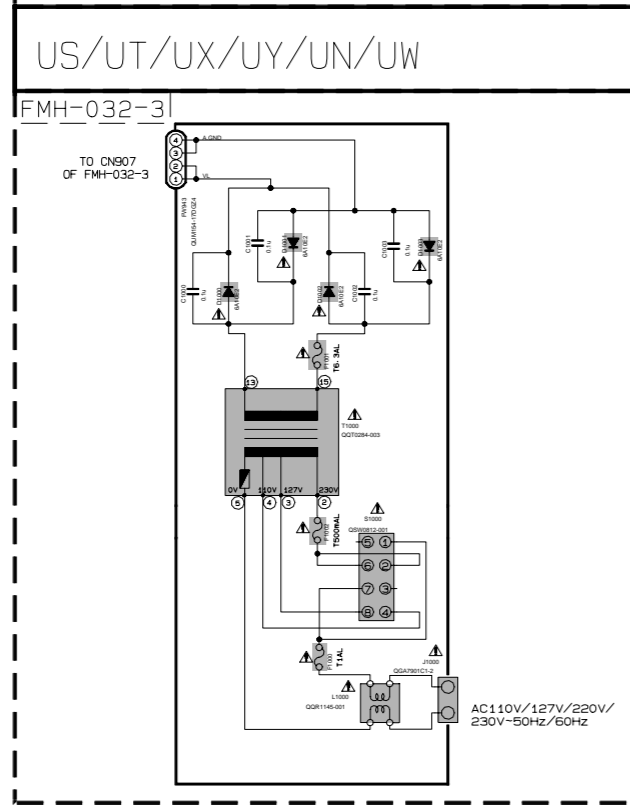
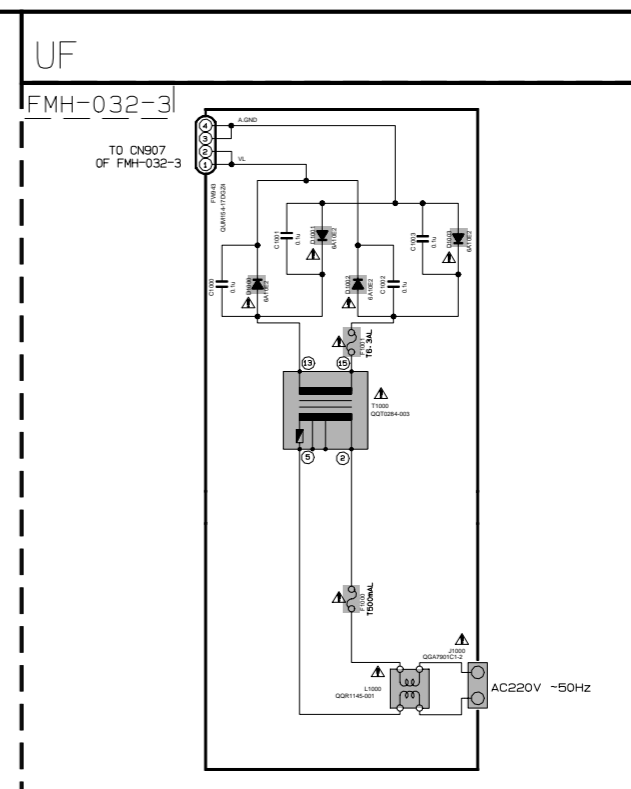
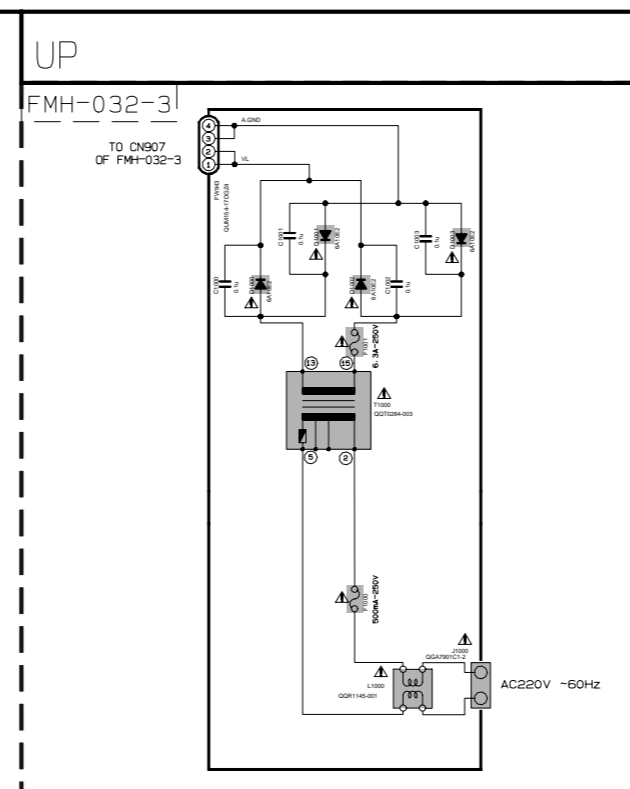
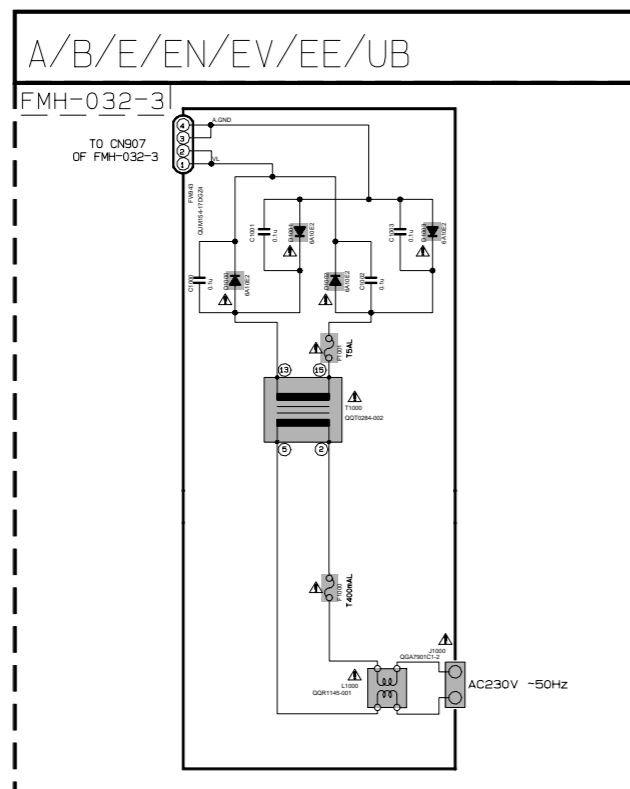
Tr. NO.	Q2			Q3			Q4		
PIN NO.	E	C	B	E	C	B	E	C	B
AM 522kHz NO SIGNAL	0	0	7.0	0	0	0.7	0	3.6	0.7
AM 144kHz NO SIGNAL	0	0	0.3	0	0.3	0.3	3.6	3.6	3.6

➔ FM/TUNER MAIN SIGNAL
 ➔ AM SIGNAL

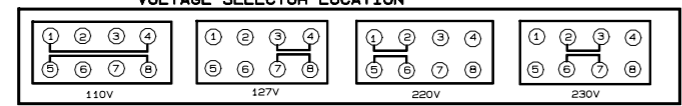
⚠ Parts are safety assurance parts. When replacing those parts make sure to use the specified one.

Power supply circuit

6
5
4
3
2
1



VOLTAGE SELECTOR LOCATION



EXPLANATION OF OVERALL OF SCHEMATIC

MODEL : UX-P3/UX-P3R/UX-P4R

SHEET NUMBER	MODEL NUMBERS TO BE APPLIED	CIRCUITS DESCRIPTION
1/8	UX-P3/UX-P3R/UX-P4R	PRIMARY WITH MAINS TRANSFORMER
2/8	UX-P3/UX-P3R/UX-P4R	DC REGULATOR, AUDIO OUTPUT, EXTERNAL INPUT, SOURCE SELECTOR SWITCH
3/8	UX-P3/UX-P3R/UX-P4R	LCD DISPLAY/SYSTEM CONTROL/USERS KEY CONTROL
4/8	UX-P3/UX-P3R/UX-P4R	CD SERVO AND CD SYSTEM CONTROL, CD CHANGER MECHANISM CONTROL
5/8	UX-P3/UX-P3R/UX-P4R	TAPE DECK MECHANISM CONTROL, TAPE CIRCUITS SUCH AS PRE-AMP AND BIAS
6/8	UX-P3	TUNER RF/IF/FM MULTIPLEX (ONLY FOR A, UB, UF, UN, UP, US, UT, UW, UX, UY)
7/8	UX-P3R/UX-P4R	TUNER RF/IF/FM MULTIPLEX (ONLY FOR B, E, EN, EV)
8/8	UX-P3REEM	TUNER RF/IF/FM MULTIPLEX (ONLY FOR EE)

NOTE : MARK(*) IS TO SHOW DEVIATION IN VERSIONS. DETAILS ARE EXPLAINED NEAR MARK.

VERSION CODES

A	: AUSTRALIA
B	: U.K
E	: CONTINENTAL EUROPE
EE	: RUSSIA
EN	: NORDIC COUNTRIES
EV	: EASTERN EUROPE
UB	: HONG KONG
UF	: CHINA
UN	: INDONESIA
UP	: KOREA
UW	: SOUTH AFRICA
UT	: TAIWAN
UX	: SAUDI ARABIA
UY	: ARGENTINA
US	: SINGAPORE AND UNIVERSAL EXCEPT ALL OF ABOVE

NOTES

1. VOLTAGES ARE DC-MEASURED WITH A DIGITAL VOLT METER OR OSCILLOSCOPE WITHOUT SHUNT SIGNAL.
CONDITION --- CD STOP MODE
INSIDE BRACKET VALUES ARE OTHER FUNCTIONS

2. UNLESS OTHERWISE SPECIFIED, RESISTORS ARE 1/8W ±5% CARBON RESISTOR. ALL RESISTANCE VALUES ARE IN OHM(S). ALL CAPACITORS ARE CERAMIC CAPACITOR OR MYLAR CAPACITOR. ALL CAPACITANCE VALUES ARE IN μF (EMF). ALL INDUCTANCE VALUES ARE IN mH (EMF). ALL E-CAPACITORS ARE SHOWN IN THE FORM OF CAPACITANCE (μF)/RATED VOLTAGE (V).

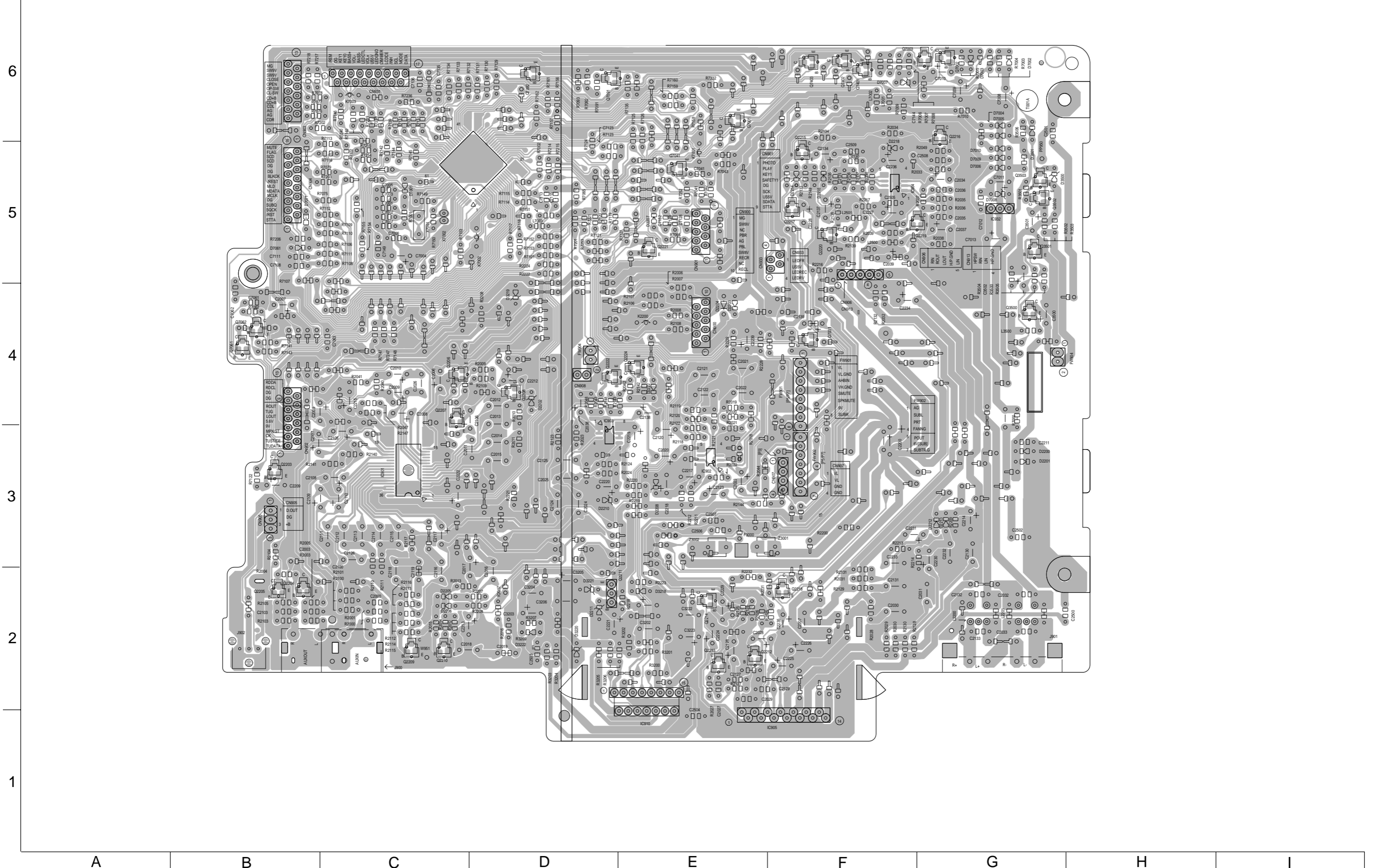
⚠ Parts are safety assurance parts. When replacing those parts make sure to use the specified one.

A B C D E F G H I

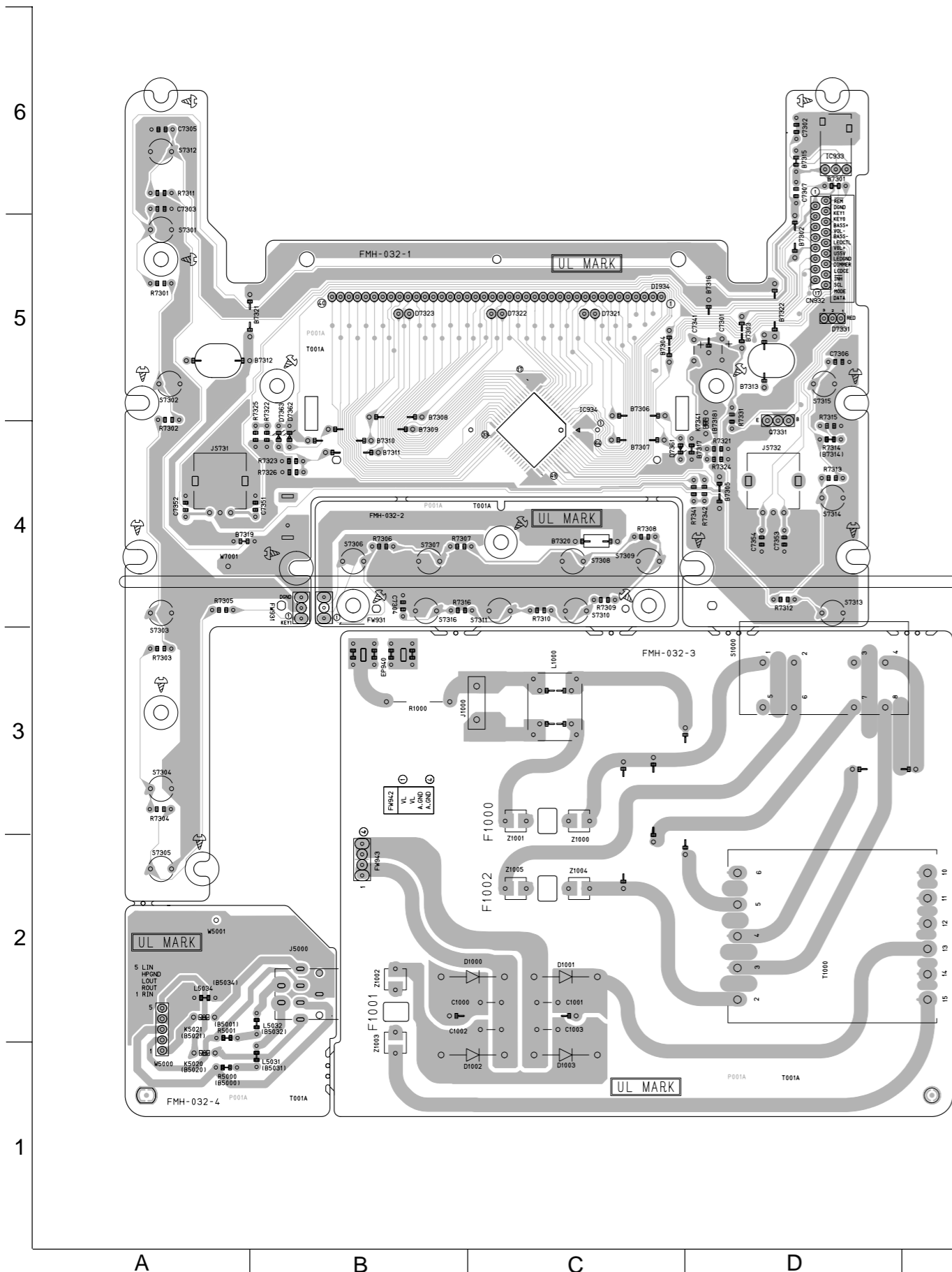
Printed circuit boards

■ Main board

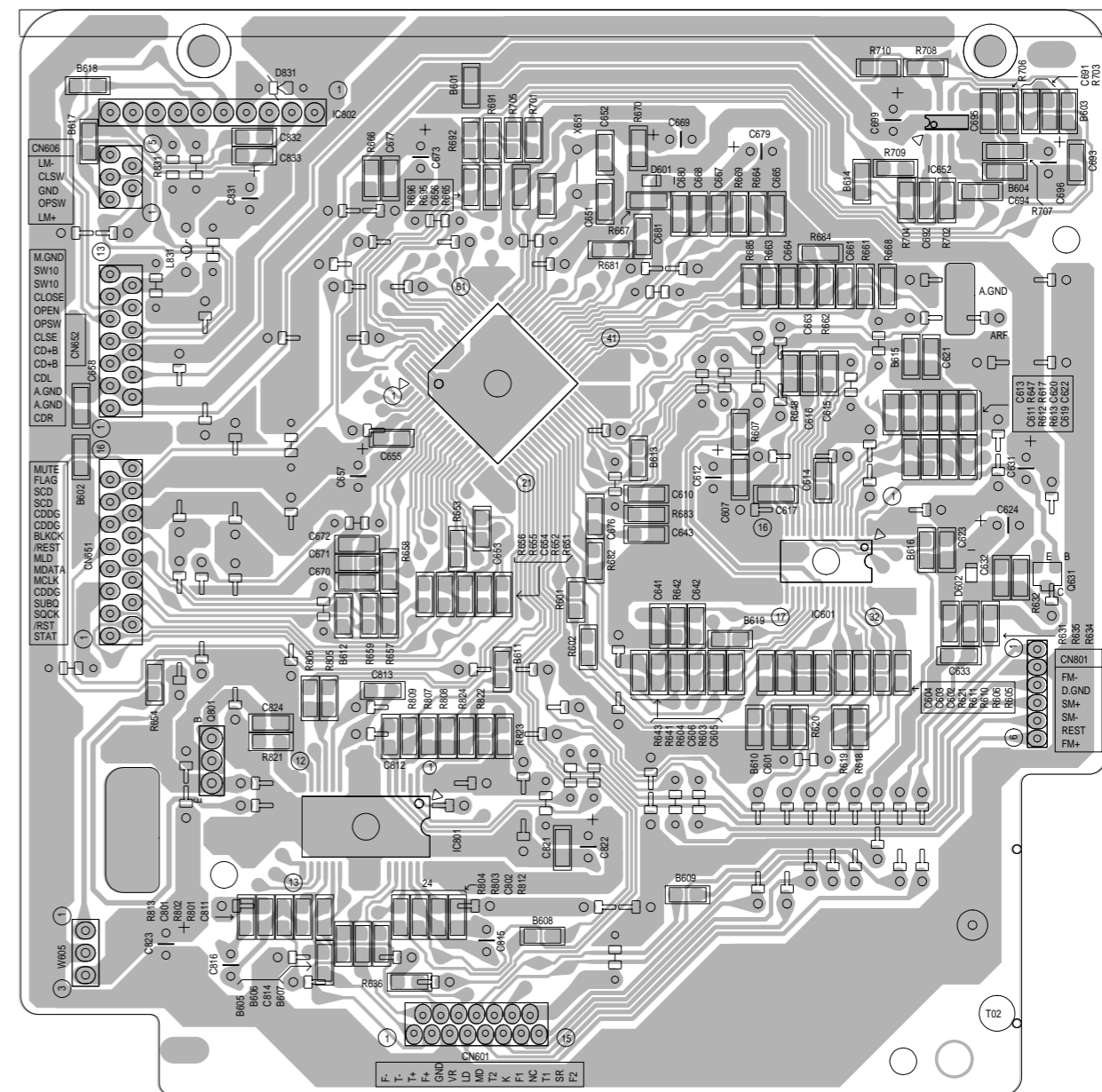
Block No. 01



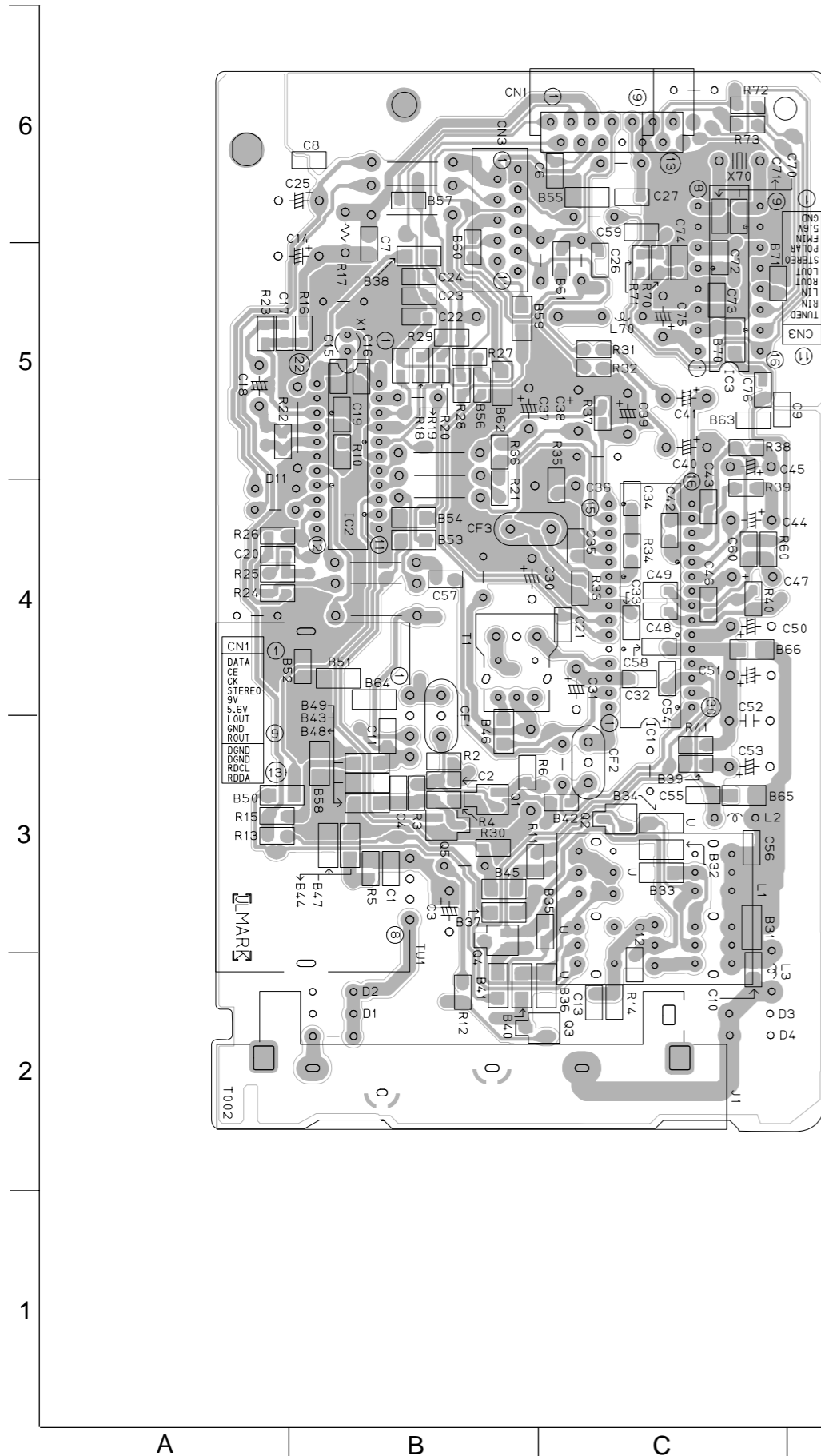
■ Front board Block No. 02



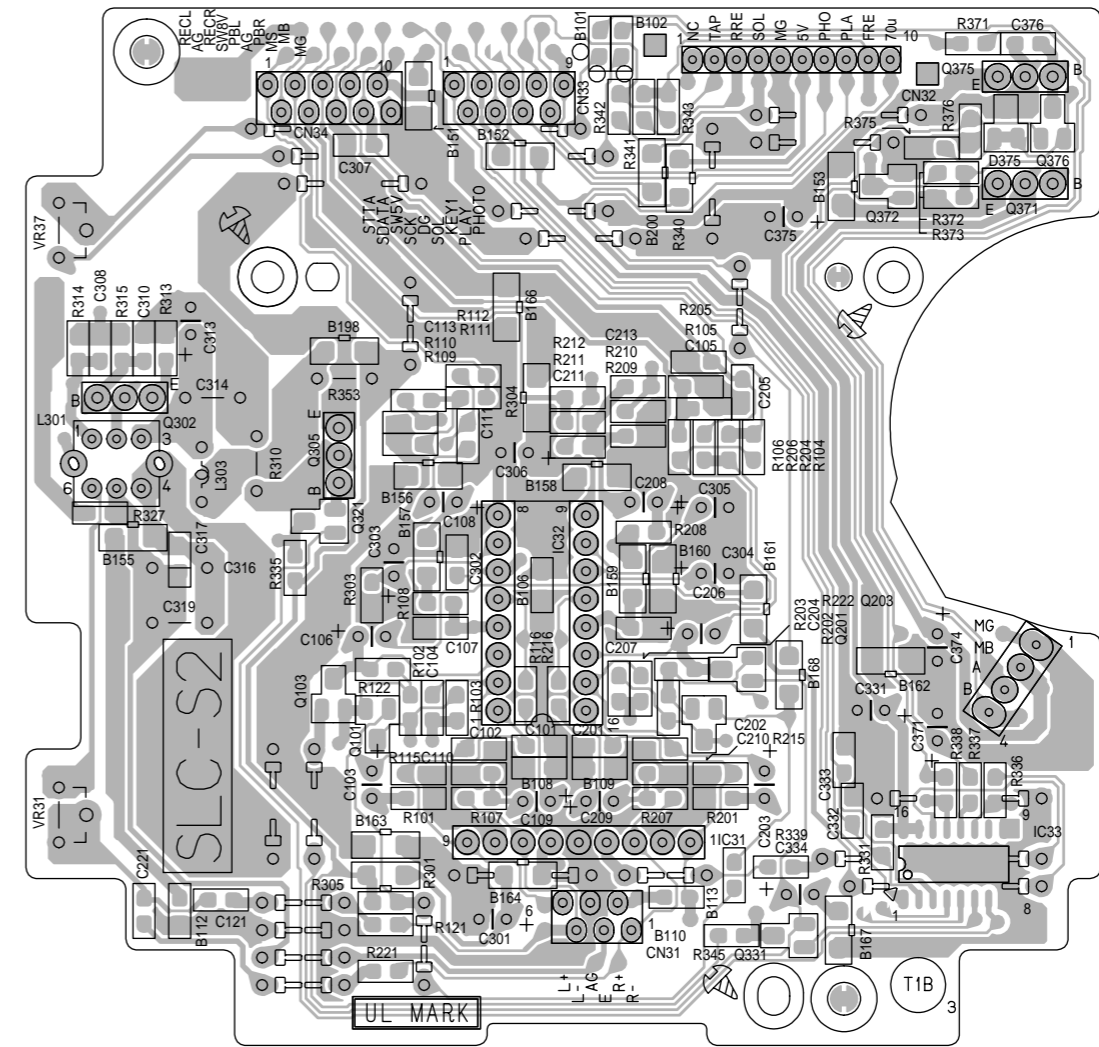
■ CD servo board Block No. 03



■ Tuner board Block No. 04



■ Head amplifier board Block No. 05



■ Cassett switch board Block No. 06

